

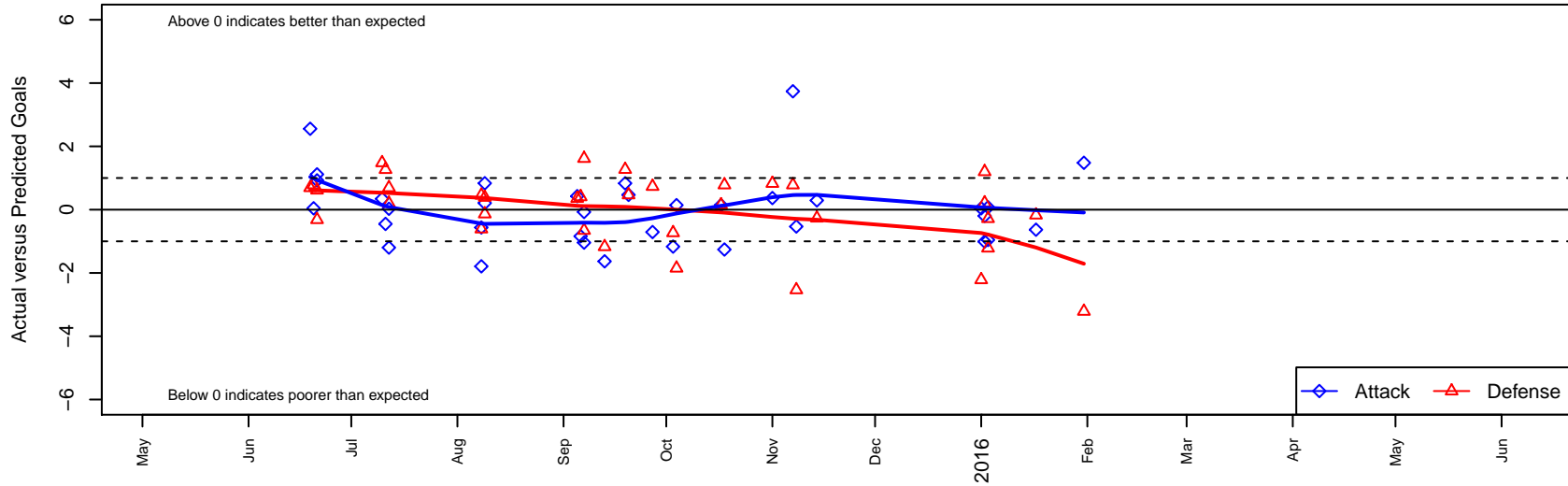
FPSC Fury Black B99

Franklin Pierce SC
 Tacoma, WA
 B99 total strength=1602
 attack=17.19 defense=15.1
 fall league = PSPL WSPL U16
 notes= Henry 2015

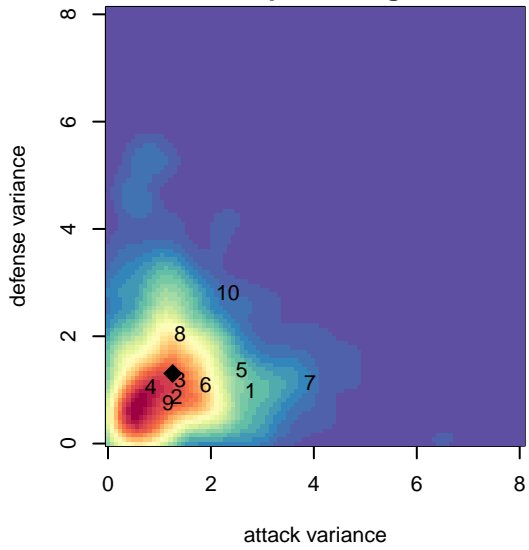
alt names used:
 FPSC FURY B99 BLACK (WA)
 FPSC B99 Black Henry
 FPSC FURY B99 BLACK (WA)
 FPSC Fury B99 Black
 FPSC Fury B99 Black
 FPSC Fury B99 Black Brandon Henry
 FPSC FURY B99 BLACK (WA)

Venues played:
 2015 Rainier Challenge Samba U16
 2015 Nike Crossfire Challenge Super Group U'
 2015 Bend Premier Cup U16B GOLD U16
 2015 Labor Day Cup BU16 Gold
 2015 PSPL WSPL U16
 2015 PacNW Winter Classic Premier U16
 2015 WA Cup HS Gold U16

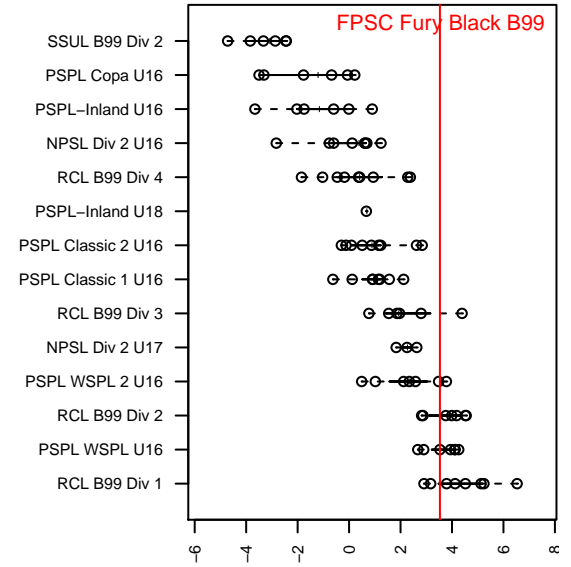
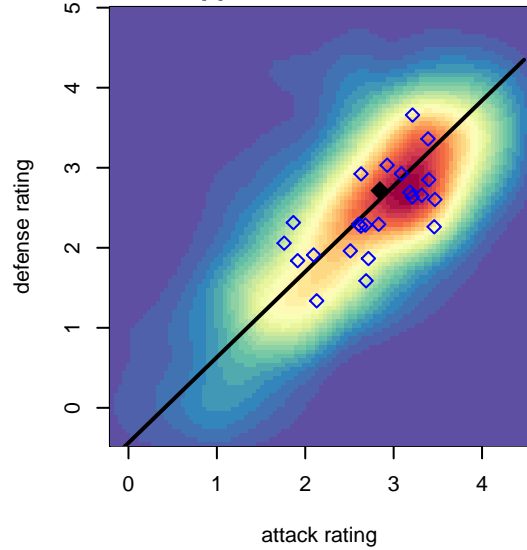
FPSC Fury Black B99
 Dots are actual minus expected GF (blue circles) and GA (red triangles).
 Blue line is smoothed change in attack strength. Red is smoothed change in defense strength.



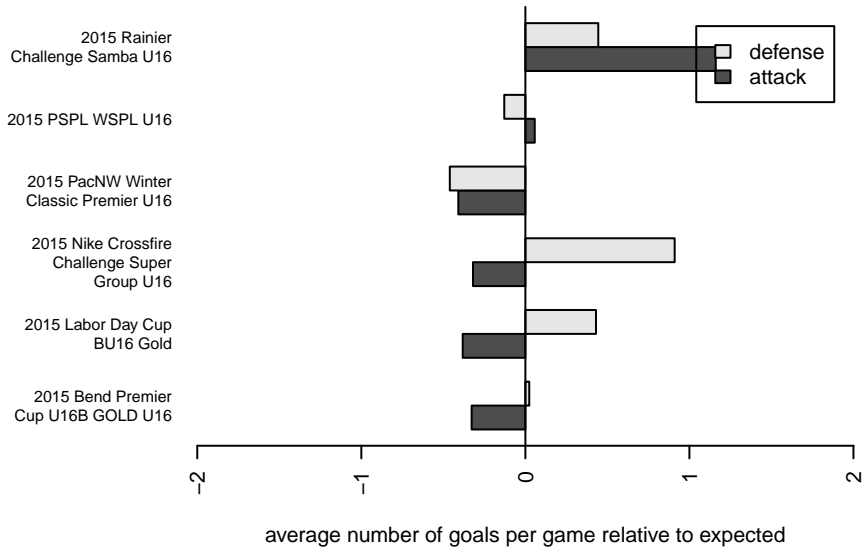
**attack and defense variance (black dot)
relative to other teams
and top 10 in region**



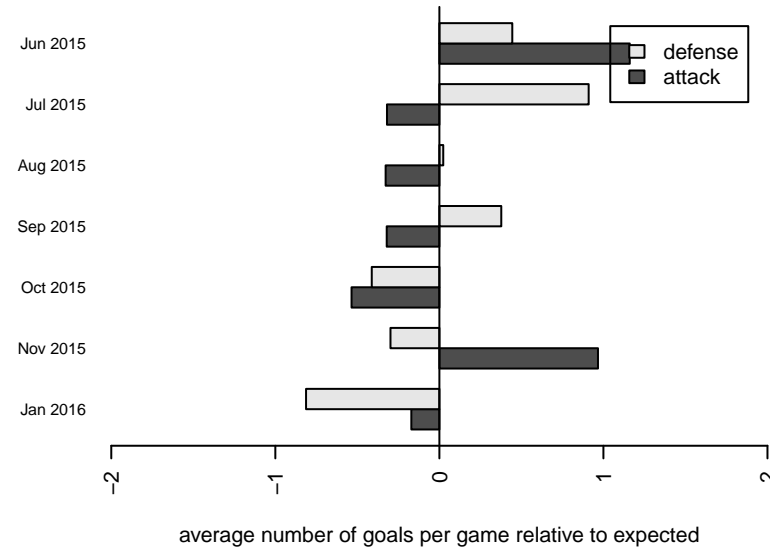
**attack and defense rating
relative to others at age
and all opponents in last 13 months**



Performance relative to 13 month average



Performance relative to 13 month average



| date | home | | away | | venue | pred.home | pred.away |
|------------|---------------------------|---|--------------------------------|---|--|-----------|-----------|
| 2016-01-31 | FPSC Fury Black B99 | 4 | RSA Elite White B99 | 4 | 2015 WA Cup HS Gold U16 | 2.52 | 0.79 |
| 2016-01-17 | FPSC Fury Black B99 | 1 | Emerald City FC Green B99 | 1 | 2015 WA Cup HS Gold U16 | 1.63 | 0.83 |
| 2016-01-03 | MVP Rapids Navy B99 | 1 | FPSC Fury Black B99 | 2 | 2015 PacNW Winter Classic Premier U16 | 0.72 | 1.92 |
| 2016-01-03 | PacNW Blue B99 | 2 | FPSC Fury Black B99 | 0 | 2015 PacNW Winter Classic Premier U16 | 0.78 | 0.96 |
| 2016-01-02 | FWFC Blue B99 | 0 | FPSC Fury Black B99 | 1 | 2015 PacNW Winter Classic Premier U16 | 1.20 | 1.20 |
| 2016-01-02 | FPSC Fury Black B99 | 0 | WPFC White B99 | 1 | 2015 PacNW Winter Classic Premier U16 | 1.01 | 1.21 |
| 2016-01-01 | PacNW Blue B99 | 3 | FPSC Fury Black B99 | 1 | 2015 PacNW Winter Classic Premier U16 | 0.78 | 0.96 |
| 2015-11-14 | Highline Premier Blue B99 | 1 | FPSC Fury Black B99 | 2 | 2015 PSPL WSPL U16 | 0.73 | 1.71 |
| 2015-11-08 | FPSC Fury Black B99 | 1 | Central WA SA Navy B99 | 4 | 2015 PSPL WSPL U16 | 1.53 | 1.47 |
| 2015-11-07 | FPSC Fury Black B99 | 5 | Cobra Aguilitas B99 | 1 | 2015 PSPL WSPL U16 | 1.26 | 1.78 |
| 2015-11-01 | FPSC Fury Black B99 | 2 | Emerald City FC Green B99 | 0 | 2015 PSPL WSPL U16 | 1.63 | 0.83 |
| 2015-10-18 | Cobra Aguilitas B99 | 1 | FPSC Fury Black B99 | 0 | 2015 PSPL WSPL U16 | 1.78 | 1.26 |
| 2015-10-17 | Washington East SC B99 | 1 | FPSC Fury Black B99 | 1 | 2015 PSPL WSPL U16 | 1.15 | 0.86 |
| 2015-10-04 | FPSC Fury Black B99 | 1 | Washington East SC B99 | 3 | 2015 PSPL WSPL U16 | 0.86 | 1.15 |
| 2015-10-03 | FPSC Fury Black B99 | 0 | ASE Emerald B99 | 2 | 2015 PSPL WSPL U16 | 1.17 | 1.27 |
| 2015-09-27 | FPSC Fury Black B99 | 1 | Highline Premier Blue B99 | 0 | 2015 PSPL WSPL U16 | 1.71 | 0.73 |
| 2015-09-20 | Central WA SA Navy B99 | 1 | FPSC Fury Black B99 | 2 | 2015 PSPL WSPL U16 | 1.47 | 1.53 |
| 2015-09-19 | ASE Emerald B99 | 0 | FPSC Fury Black B99 | 2 | 2015 PSPL WSPL U16 | 1.27 | 1.17 |
| 2015-09-13 | Emerald City FC Green B99 | 2 | FPSC Fury Black B99 | 0 | 2015 PSPL WSPL U16 | 0.83 | 1.63 |
| 2015-09-07 | Dragons FC B99 | 1 | FPSC Fury Black B99 | 1 | 2015 Labor Day Cup BU16 Gold | 0.34 | 2.04 |
| 2015-09-07 | FPSC Fury Black B99 | 1 | Kitsap Alliance FC Red B99 | 0 | 2015 Labor Day Cup BU16 Gold | 1.07 | 1.62 |
| 2015-09-06 | FPSC Fury Black B99 | 2 | Seattle United Samba B00 | 0 | 2015 Labor Day Cup BU16 Gold | 2.84 | 0.41 |
| 2015-09-05 | FC Alliance B B99 | 0 | FPSC Fury Black B99 | 2 | 2015 Labor Day Cup BU16 Gold | 0.35 | 1.57 |
| 2015-08-09 | FPSC Fury Black B99 | 4 | BSC Portland Black-Legends B99 | 1 | 2015 Bend Premier Cup U16B GOLD U16 | 3.17 | 0.86 |
| 2015-08-09 | FPSC Fury Black B99 | 3 | MRFC Blue B99 | 0 | 2015 Bend Premier Cup U16B GOLD U16 | 2.79 | 0.39 |
| 2015-08-08 | Pacific FC Revolution B99 | 0 | FPSC Fury Black B99 | 4 | 2015 Bend Premier Cup U16B GOLD U16 | 0.46 | 4.56 |
| 2015-08-08 | FPSC Fury Black B99 | 1 | MRFC Blue B99 | 1 | 2015 Bend Premier Cup U16B GOLD U16 | 2.79 | 0.39 |
| 2015-07-12 | SSC Shadow A B99 | 1 | FPSC Fury Black B99 | 2 | 2015 Nike Crossfire Challenge Super Grou | 1.69 | 1.97 |

| date | home | | away | | venue | pred.home | pred.away |
|-------------|----------------------------|---|----------------------------|---|--|------------------|------------------|
| 2015-07-12 | FPSC Fury Black B99 | 0 | FWFC Blue B99 | 1 | 2015 Nike Crossfire Challenge Super Grou | 1.20 | 1.20 |
| 2015-07-11 | Arsenal FC Academy B99 | 0 | FPSC Fury Black B99 | 0 | 2015 Nike Crossfire Challenge Super Grou | 1.27 | 0.45 |
| 2015-07-10 | Crossfire Premier A B99 | 0 | FPSC Fury Black B99 | 1 | 2015 Nike Crossfire Challenge Super Grou | 1.48 | 0.66 |
| 2015-06-21 | Normandy Park FC White B00 | 1 | FPSC Fury Black B99 | 3 | 2015 Rainier Challenge Samba U16 | 0.68 | 1.88 |
| 2015-06-21 | FPSC Fury Black B99 | 2 | Kitsap Alliance FC Red B99 | 1 | 2015 Rainier Challenge Samba U16 | 1.07 | 1.62 |
| 2015-06-20 | PacNW Blue B99 | 0 | FPSC Fury Black B99 | 1 | 2015 Rainier Challenge Samba U16 | 0.78 | 0.96 |
| 2015-06-19 | FPSC Fury Black B99 | 5 | Eastside FC White B99 | 0 | 2015 Rainier Challenge Samba U16 | 2.44 | 0.69 |